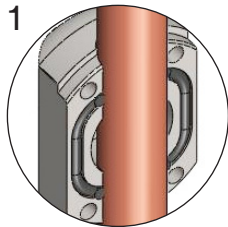
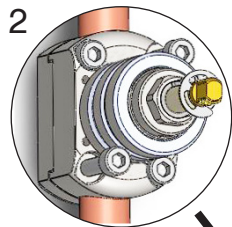




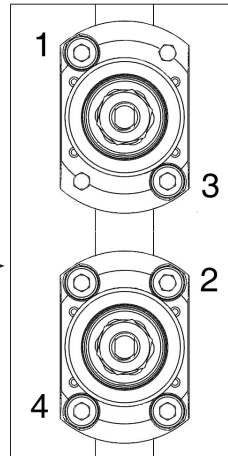
Aladdin EasyFit Isolator Quick Guide



1
Rotate Lower Housing onto pipe

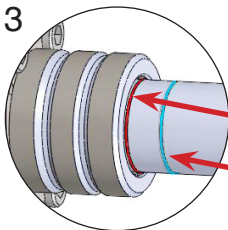


2
Clamp Housing using x4 Bolts

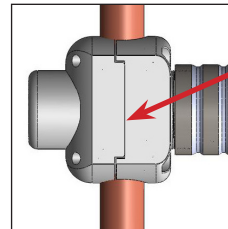


Note!

Fully tighten Bolts 1 and 3 use a high clutch setting on the drill to avoid breaking the Bolts, finish with Bolts 2 and 4.

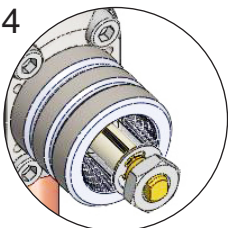


3
With Socket on Drill and in low gear, drive down to the socket line.
Red Line:
15mm & 22mm
Blue line:
15mm Pro & 28mm

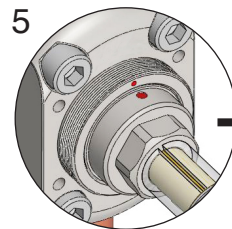


Note!

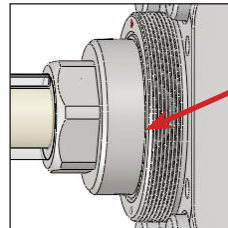
Housing halves must be completely flush on both sides. Gasket may extrude from the gap.



4
Remove Collar

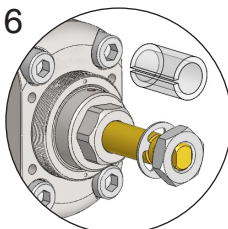


5
Align Red Dots

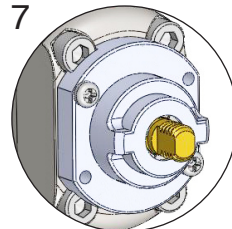


Note!

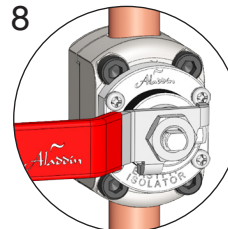
Brass Plug thread level with steel Housing thread.



6
Remove Polytube (NOT CIRCLIP)



7
Fit Plastic Cap & Handle



8
Isolated!

ESSENTIAL DO'S & DON'TS

- ONLY use the EasyFit Isolator Tool Kit to fit the EasyFit Isolator.
- For U.S 1/2" copper tube (not steel or plastic).
- DO NOT use on gas pipe
- Use a fully charged 18v battery drill (or powerful 14v drill). The valve can also be fitted manually (using an adjustable wrench to fit the largest socket).
- DO NOT remove the Polytube until step 6.
- DO NOT rotate Plug after step 7.

SINGLE USE ONLY

For more information visit: www.aladdin-products.co.uk